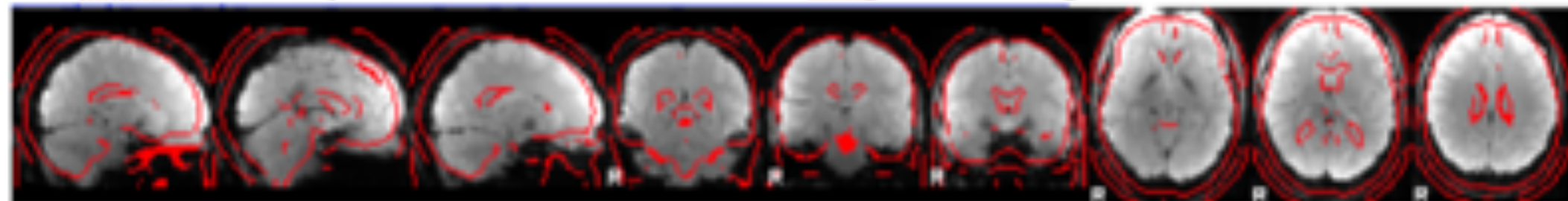
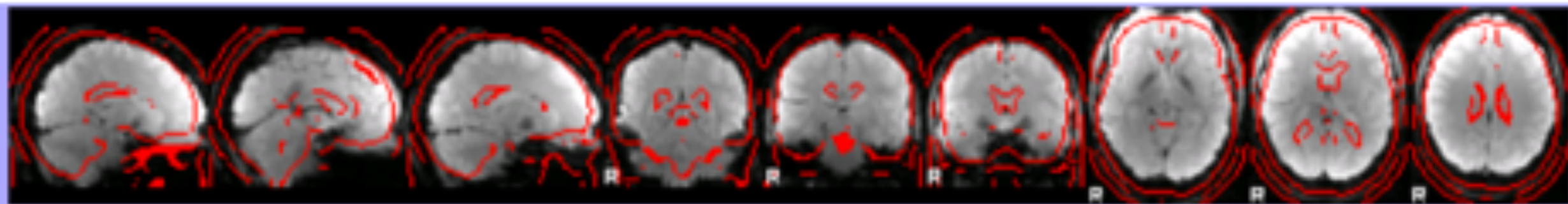


80137 preproc QC with only meanEPI & rawMPRAGE included in coreg & estimate stage:



[_nfs_pep_ccoe_ep_80137_socceval_run_1_wuf171004_80137-0009-00001-000001-01](#)

80137 preproc QC with allRunsEPIs included in "other" option for coreg & estimate stage AND with BET T1 used during coreg & normalization



[_nfs_pep_ccoe_ep_80137_socceval_run_1_wuf171004_80137-0009-00001-000001-01](#)